

THE FAIRWAYS OF BOCA LAGO

BEING A REPLAT OF A PART OF THE "REPLAT OF BOCA LAGO (P.U.D.)" AS RECORDED IN PLAT BOOK 31, PAGES 62-71 (INCLUSIVE), PUBLIC RECORDS, PALM BEACH COUNTY, FLORIDA, AND LYING IN SECTION 20, TWP. 47 SO., RGE 42 EAST.

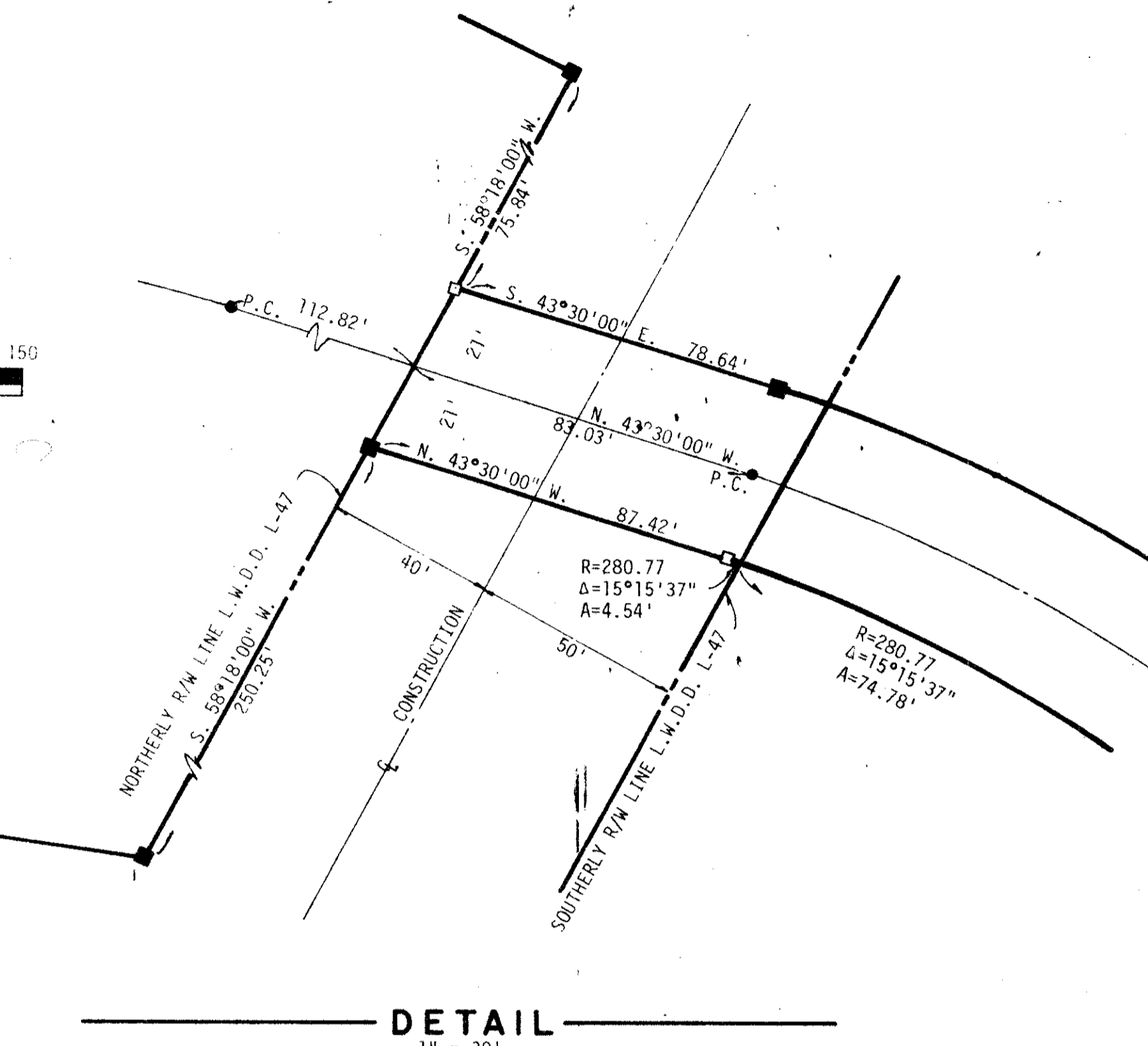
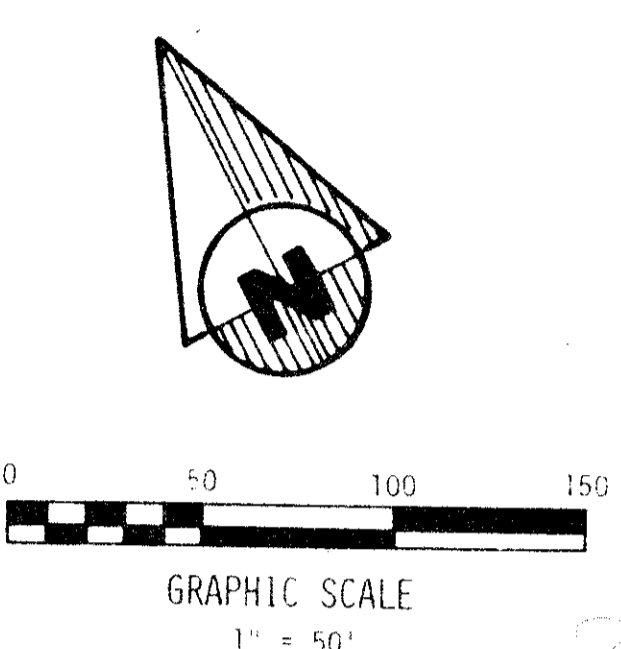
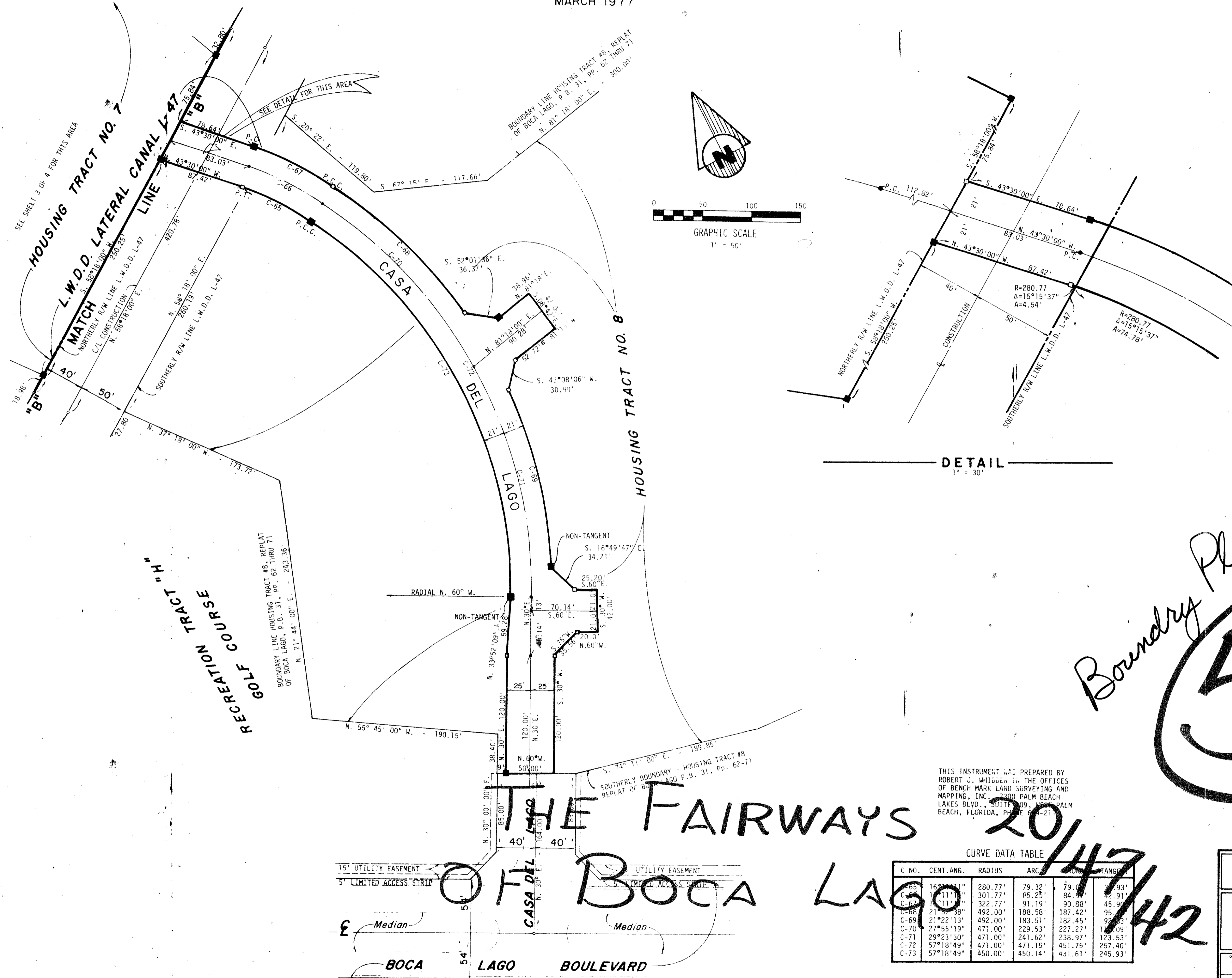
MARCH 1977

39

STATE OF FLORIDA
COUNTY OF PALM BEACH

THIS PLAT WAS FILED FOR RECORD AT THIS OFFICE OF THE COUNTY CLERK, PALM BEACH COUNTY, FLORIDA, ON MARCH 14, 1977 AND DULY RECORDED IN PLAT BOOK 39 ON PAGES 33 AND 34.

JOHN B. DUNKLE, CLERK
CIRCUIT COURT
BY: _____ DC



Boundary Plat

54

THE FAIRWAYS OF BOCA LAGO

20/47/42

THIS INSTRUMENT WAS PREPARED BY ROBERT J. WHITGREN IN THE OFFICES OF BENCH MARK LAND SURVEYING AND MAPPING, INC., 2300 PALM BEACH LAKES BLVD., SUITE 209, PALM BEACH, FLORIDA, PHONE 647-2111.

CURVE DATA TABLE

C. NO.	CENT. ANG.	RADIUS	ARC	CHORD	ANGLE
C-65	16°21'11"	280.77'	79.32'	79.00'	79.93'
C-66	16°11'11"	301.77'	85.25'	84.90'	82.91'
C-67	16°11'11"	322.77'	91.19'	90.88'	89.90'
C-68	21°37'38"	492.00'	188.58'	187.42'	187.95'
C-69	21°22'13"	492.00'	183.51'	182.45'	183.03'
C-70	27°55'19"	471.00'	229.53'	227.27'	228.09'
C-71	29°23'30"	471.00'	241.62'	238.97'	239.53'
C-72	57°18'49"	471.00'	471.15'	451.75'	457.40'
C-73	57°18'49"	450.00'	450.14'	431.61'	435.93'

CONRAD WISCHAEFER CONSULTING ENGINEERS, INC.
PALM BEACH COUNTY, FLORIDA

THE FAIRWAYS AT BOCA LAGO

DESIGNED	DRAWN	CHECKED	JOB NO.	DRAWING NO.
	E.L.O.		3005	
DATE	SCALE	APPROVED	FILE NO.	SHEET NO.
MAR '77	1" = 50'			4 of 4